



nzbeeswax
LIMITED

PRICE LIST

October 2019



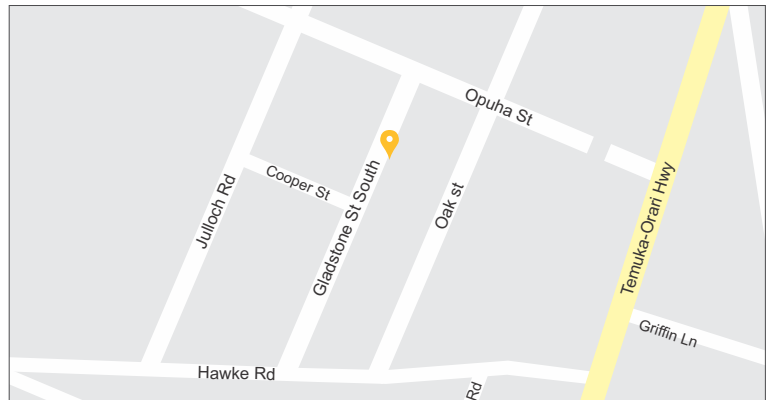
For all orders and enquiries contact
03 693 9189, 07 849 6853 or info@beeswax.co.nz

South Island Branch/Head Office

44 Gladstone St South
Orari, RD 22, Geraldine 7992
P: 03 693 9189
E: info@beeswax.co.nz

Hours:

Monday to Friday:
8.00am till 5.00pm

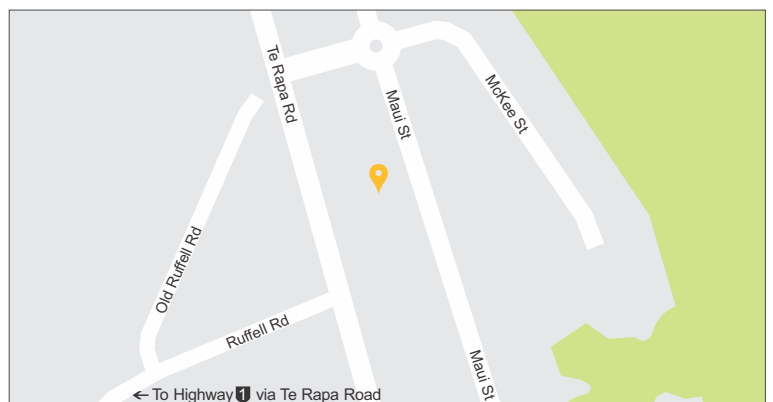


North Island Branch

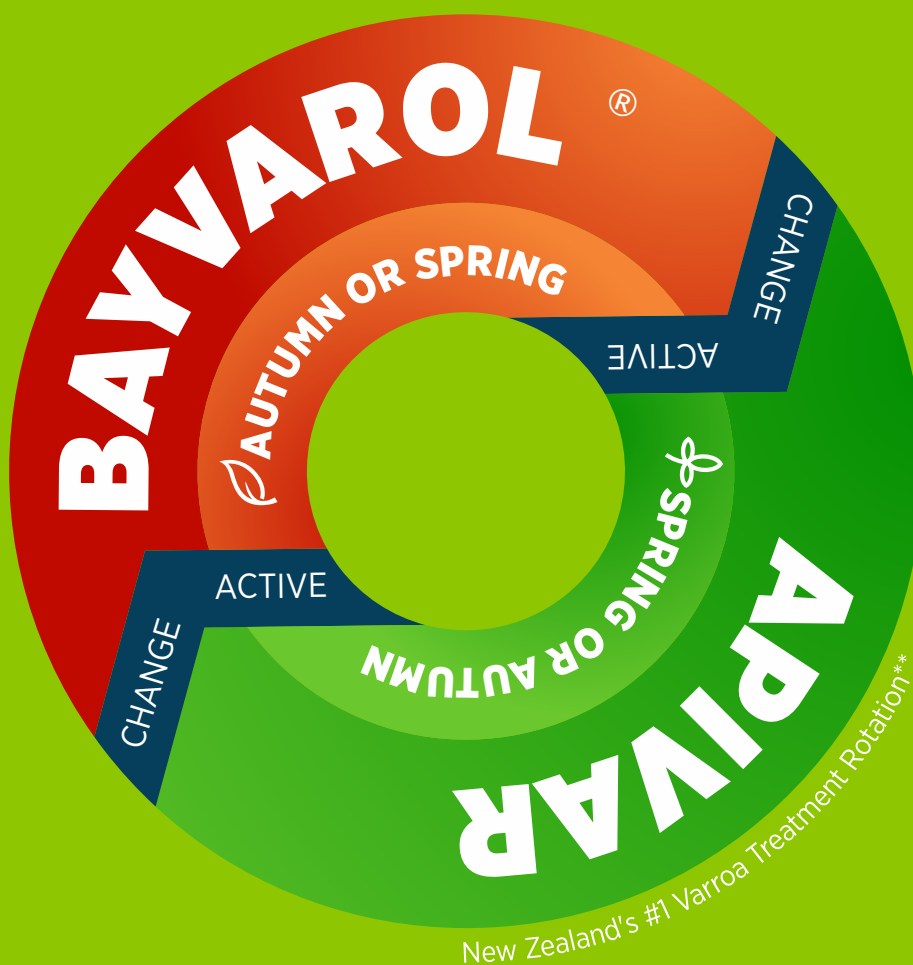
153 Maui St
Pukete, Hamilton 3200
P: 07 849 6853
E: info@beeswax.co.nz

Hours:

Monday to Friday:
8.00am till 5.00pm



ROTATION MANAGES RESISTANCE



- Do not under dose — use 4 strips per brood box to ensure effective knock down*
- Place strips in the correct position in the brood box i.e. next to brood frames
- Do not leave in for too long — treat for 6-8 weeks
- Remove immediately at 8 weeks - delaying removal helps Varroa mites develop resistance through exposure to sub-lethal doses



*Please refer to label for full dosing regime

** New Zealand's #1 varroa treatment rotation among commercial beekeepers, 2017 BEE COLONY LOSS SURVEY

Apivar, New Zealand's #1 varroa treatment:*

Why trust your hives with anything less?



Proven safe and effective

for more than 22 years

=> Kills up to 99% mites in 1 application¹



Trusted by NZ beekeepers

for over 15 years



Unique controlled-release technology

over the full 6 to 10 week treatment period



No negative effect on brood or queens

Independently verified in scientific studies²



No evidence of resistance

anywhere worldwide



Manufactured in France

to the highest pharmaceutical standards



Not a Synthetic Pyrethroid

Unique chemical class and mode of action



• Unique • Proven • Trusted •

Worldwide
Varroa
treatment
leader
35+
countries



5+
million
colonies
treated
per year



 **nzbeeswax**
LIMITED

Exclusively distributed in New Zealand by:
New Zealand Beeswax Ltd

Ph: 03 693 9189 - Email: info@apivar.co.nz & info@beeswax.co.nz
www.apivar.co.nz & www.beeswax.co.nz

Prices as at January 2019

10+ strips	\$4.89 each +GST
100+ strips	\$4.45 each +GST
500+ strips	\$3.78 each +GST
1,000+ strips	\$3.49 each +GST
5,000+ strips	\$3.25 each +GST
10,000+ strips	\$3.20 each +GST
20,000+ strips	\$3.15 each +GST

You need two strips per brood box.
Apivar strips come in sachets of 10 strips,
must be ordered in multiples of 10.
1,000 strips per carton.

APV-38-NZ-N04-01/19

*New Zealand's #1 varroa treatment among commercial beekeepers, 2017 BEE COLONY LOSS SURVEY
1 - Efficacy tests: Anti-varroa treatments - FNOSAD [National Federation of Departmental Apian Health Organizations]
2007, 2008, 2009, 2010, 2011, 2012, 2013 et 2014 - France
2 - Efficacy of Apivar® (amitraz) for Varroa mite control in Maryland - Pettis J.; VanEngelsdorp D.; October 20th, 2009.

► FOR FAST, EASY AND RELIABLE
VARROA MITE MONITORING



ESSENTIAL
TOOL



 **nzbeeswax**
LIMITED

Exclusively distributed in New Zealand by:
New Zealand Beeswax Ltd

Ph: 03 693 9189 - Email: info@apivar.co.nz & info@beeswax.co.nz
WWW.APIVAR.CO.NZ & WWW.BEESWAX.CO.NZ

2019 | 1 + \$29.00 each plus GST
PRICE | 12 + \$27.55 each plus GST

► An ESSENTIAL new tool for your apiary
More info: www.veto-pharma.com

Vétô-pharma
Committed to apiculture

FRAME WASH & WAX SERVICE

SAVE
\$1
per frame



\$ Save Money **Save Time** **Save the Environment**

NZ Beeswax Ltd is proud to introduce the first industrial Frame Wash & Wax Service

Situated in our Hamilton Branch and ready for service.

- Full Depth and $\frac{3}{4}$ Plastic Frames (wood rim with plastic inserts aren't suitable).
- You get 100% of your own Frames back, freshly coated with 30g of Beeswax (customisation available).
- Once Washed and Waxed, they will be returned in cartons on a pallet; just like new, only cheaper (and better for the environment).
- Comprehensive wash and cleaning cycle between every beekeeper batch.
- Saving \$1 a frame compared to the equivalent new FD Waxed Plastic Frame price.

What next?

- 1) Express your interest with the NZB Team, info@beeswax.co.nz. We will contact you when a production slot is available.
- 2) Until then, palletise separately your Full Depth Frames from your $\frac{3}{4}$ Frames.
- 3) When your processing slot comes up, we will email packing/freighting information.

FD or 3/4	Wash and Wax
5000+ (min)	\$1.93 +gst
10000+	\$1.87 +gst

Contact the NZB Team for more information

HOW TO: Prepare your frames for NZB's **Frame Wash & Wax Service**

SORT. STACK. WRAP. CONTACT



- Palletise your Full Depth Frames separately from your $\frac{3}{4}$ Frames
- Only send Plastic Frames suitable to be Washed & Waxed
- Note: Wood Rim Frames with Plastic Inserts are not suitable for Washing
- Stack and Wrap neatly on a pallet, do not overlap the pallet edge
- Store Frames inside, away from direct sunlight... UV/heat damages frames
- Contact the NZB team to book in your production slot, before dispatching

\$ Save Money  **Save Time**  **Save the Environment**

Terms and Conditions:

- Once Frames have been Washed & Waxed, they need to be collected/dispatched within 2 working days.
- Disposal fee will apply to any frames unsuitable for washing e.g. deformed, UV damaged, broken lugs etc.
- Pallets unsuitable for re-use, are to be returned, or disposed of with fees on-charged

MEGABEE[®]

honeybee protein supplement

HAS QUICKLY BECOME NEW ZEALAND'S

GOLD STANDARD

THE #1 BEE NUTRITION PRODUCT IN
NEW ZEALAND & USED BY 9 OUT OF 10
OF THE LARGEST BEEKEEPERS



BUILT BY
RENOWNED
SCIENTISTS



HIGHLY
PREFERRED
BY BEES



TRUSTED BY
THOUSANDS OF
BEEKEEPERS



ONLY THE
FINEST NATURAL
INGREDIENTS

WHAT IS MEGABEE?

MegaBee is a highly optimized, exceedingly palatable pollen supplement built with honeybee help. We specifically formulated MegaBee to be a product that bees not only eat, but as one that they actually prefer. The result is a supplemental feed that beekeepers trust to give their bees the boost they need to build, sustain, or get through a long season.

OUR HISTORY

In 2002 we began work on a dietary supplement for honeybees that would strengthen and improve longevity. Instead of telling the bees what to eat, we asked them what they preferred. After dozens of preference trials we arrived at a product that was not only perfectly balanced, but also something the bees loved. Since that point we have built our company on cutting-edge research and quality beekeeper feedback. Our customer's success is what propels us forward.

DEVELOPING MEGABEE

MegaBee is developed using sophisticated manufacturing techniques designed to optimize palatability, digestibility, and delivery of the essential elements in the diet. Tight analytical requirements and manufacturing standards ensure that MegaBee is the highest quality bee nutrition product on the market.

QUALITY NUTRITION

- BALANCED AMINO ACID PROFILE
- ACIDIC pH FOR A HEALTHY GUT
- HIGHLY PALATABLE AND PREFERRED
- ZERO ANIMAL BYPRODUCTS

what's our goal?
to build a better bee.



LEARN MORE AT:
WWW.MEGABEE.COM

EXCLUSIVELY DISTRIBUTED
IN NEW ZEALAND BY:



Ph: 03 693 9189 Email: info@beeswax.co.nz
www.beeswax.co.nz



THE MOST VERSATILE HIVE BUILDING TOOL FOR BEEKEEPERS



POLLINATION

No matter what you are pollinating, MegaBee will help make sure you are ready. Our award-winning scientists designed MegaBee to meet the demands of even the toughest commercial operation, ensuring that your bees come out looking strong and ready for the next challenge.



SPLITTING & GROWTH

Growing your numbers can be difficult, we can help. MegaBee has been shown to build bees and brood like none other by increasing individual honeybee lifespan by as much as 20 percent, giving beekeepers the numbers they need to split their hives and grow sustainably.



QUEEN REARING

Queen breeders love MegaBee because of its unique ability to stimulate the hypopharyngeal gland, responsible for royal jelly production inside the hive. Our research shows that MegaBee can triple royal jelly production and keep these vital glands viable for up to twice as long.



DAMAGE CONTROL

Opening your hive is not always a pleasant surprise. For those times there is MegaBee. Whether your hive is being affected by parasites, pathogens, or pesticides, MegaBee is able to counteract stressors by stimulating immune response and fortifying your hive with the nutrition it needs to recover.



SPRING BUILD-UP

Some seasons it can take months to get your bees going. Luckily, nothing wakes your bees up from their winter slumber quite like MegaBee. Our formula is built to work fast, delivering the essential nutrition your hive needs to start building brood and get ready for bloom.



WINTER PREP

Winter success is largely due to a storage protein sequestered in the honey bee's abdomen called vitellogenin. This complex is the currency that keeps the colony going. MegaBee delivers the essential nutrition bees need to build vitellogenin, ensuring that come spring your bees are ready.

MEGABEE PATTIES:

1+ 5KG CARTON \$39 +GST
1+ 20KG CARTON \$129 +GST
8+ 20KG CARTONS \$109 +GST
48+ 20KG CARTONS \$99 +GST
192+ 20KG CARTONS \$94 +GST

*ALL PATTIES ARE APPROX. 500G

MEGABEE POWDER:

1+ 20KG BAG(S): \$182 +GST
50+ 20KG BAGS: \$172 +GST



MEGABEE

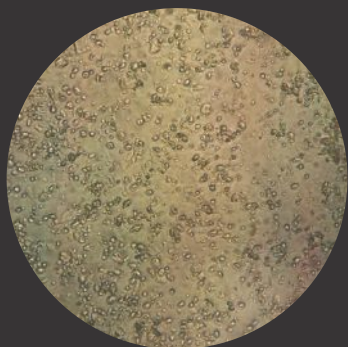
MEGABEE PATTIES W/ HIVEALIVE:

1+ 5KG CARTON \$45 +GST
1+ 20KG CARTON \$154 +GST
8+ 20KG CARTONS \$134 +GST
48+ 20KG CARTONS \$124 +GST
192+ 20KG CARTONS \$119 +GST

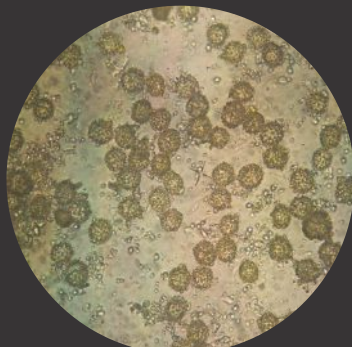
*ALL PATTIES ARE APPROX. 500G

MEGABEE®

A DIFFERENCE YOU CAN SEE



MEGABEE



POLLEN

In bee nutrition, size matters. Reducing the particle size of MegaBee to a fraction of a pollen grain allows for more of the essential nutrients your bees need to be metabolized.

This allows your hive to get more out of the same amount of feed, saving you money.



SO HOW DOES THIS AFFECT YOUR HIVE? BY HARNESSING THE HONEYBEE FOUNTAIN OF YOUTH: HYPOPHARYNGEAL GLAND PRODUCTION

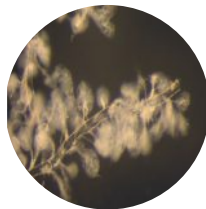
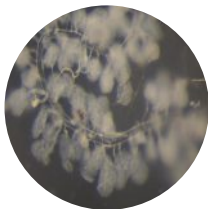
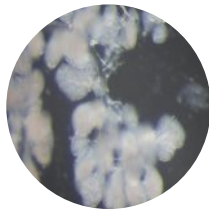
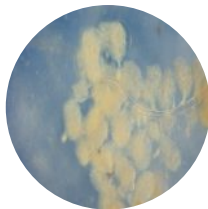
WEEK 1

WEEK 2

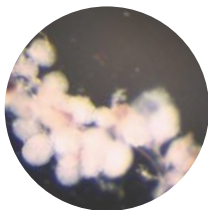
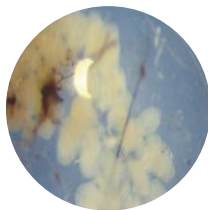
WEEK 3

WEEK 4

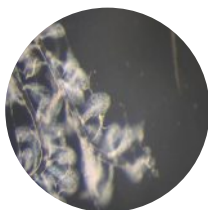
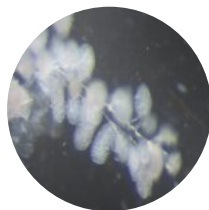
POLLEN



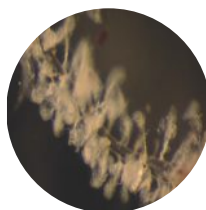
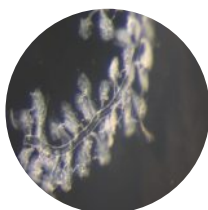
MEGABEE



OTHER
FEED



NO
FEED



When stimulated this gland manufactures royal jelly and acts as the main source of protein for both immature and aging bees. However over the bee's lifespan the gland begins to break down until no royal jelly can be produced, eventually shrivelling up like a raisin.

Once this happens a bee can no longer serve as a nurse and moves onto other tasks inside the hive.

Our goal was to see if MegaBee could extend the gland's viability and in turn get higher protein levels in the hive, extending the lifespan of each honey bee.

See the difference?

QUESTIONS? SEND US A MESSAGE AT WWW.MEGABEE.COM

ProVap

FAST Commercial Grade Oxalic Vaporizer

20 seconds per hive!



- ✓ No wand to insert, just point and shoot.
- ✓ No guessing on dosage.
- ✓ No compressor or battery.
- ✓ Just plug it in to an inexpensive inverter, generator or household socket.
- ✓ The ProVap is a standard 230 volt electrical appliance, 275 watts, 1.2 amps.
- ✓ ProVap: Consistent temp + consistent dose
= Consistent result
Competitors: Variable temp + variable dose
= Variable result

Available from





Science
based
seaweed
supplement
for bees

No1

veto-pharma.com

Used by over 3.5 million
colonies worldwide



The only scientifically validated feed supplement
with **SEAWEEDS** for bees

“

The population increased rapidly and honey production increased. On average production per hive is approx 25% more and the hives are more consistent in production.

To summarise we would recommend using HiveAlive to Beekeepers because honey production per hive far exceeds the cost of the product.”

Donald Tweeddale (20,000 hives in New Zealand)

THE SCIENTIFICALLY VALIDATED BENEFITS OF HIVEALIVE™



-15% reduction in overwintering mortality¹



+89% increase in colony population¹



+35% increase in amount of brood²



Increase in honey production²



Intestinal well-being



Healthy colonies



NEW
10 litre
bottle

Exclusively distributed in New Zealand by:



Ph: 03 693 9189 - Email: info@beeswax.co.nz
www.beeswax.co.nz

Prices as at February 2017

	GST excl	GST incl	Up to # hives treated	Price per hive at minimum dose
100ml	\$28.40	\$32.66	10	\$2.84 plus GST
500ml	\$117.58	\$135.22	50	\$2.35 plus GST
2 litre	\$297.98	\$342.68	200	\$1.49 plus GST
10 litre	\$1390	\$1598.5	1000	\$1.39 plus GST

Check out our other solutions to support honey bee health in NZ:





Trust science, Trust HiveAlive

The only feed supplement for bees with long-term supporting data

For full details on trial results
and to keep up to date with new research,

go to www.veto-pharma.com
or www.HiveAliveBees.com

Whilst it is unusual for bees to be fed seaweeds, the practice of adding seaweed to other animal feed is long established. Seaweeds are fed to animals for a plethora of benefits.^{3,4,5,6}

The reason seaweeds are so beneficial is due to their immune boosting properties and prebiotic activity as well as high levels of vitamins, minerals, amino acids and lipids.^{3,4,5,6}

The seaweeds found in HiveAlive are harvested from the clean, pure waters of the Atlantic Ocean off the coast of the west of Ireland. These seaweeds are then carefully processed to extract all the bioactives to ensure maximum efficacy.

HiveAlive is the only seaweed product that was specifically developed for honeybee health.

HiveAlive does not contain Genetically Modified (GM) ingredients, antibiotics, harsh chemicals or sodium lauryl sulfate.



¹ Charistos, L., Parashos, N & Hatjina, F (2015) Long term effects of a food supplement HiveAlive™ on honey bee colony strength and [...], Journal of Apicultural Research. ² Increase in honeybee populations with continued use of HiveAlive. Results from long-term field trials, France 2014-2015, Trial conducted by Veto-Pharma, France ³ Fleurence, J. (1999). Seaweed proteins: biochemical, nutritional aspects and potential uses. ⁴ Kovač, D (2013) Algae in food and feed. Journal of the Institute of Food Technology in Novi Sad ⁵ Lovstad Holdt & Stefan Kraan, Bioactive compounds in seaweed. ⁶ Mayer, A., & Hamann, M. (2004). Marine Pharmacology in 2000: Marine compounds with antibacterial, anticoagulant, antifungal...



Productivity



General health



Gut health



Immune function



Nutrition

3 Key Ingredients

Seaweeds



Using a patented process, a unique combination of MacroAlgae extracts, some found only on the coast of Ireland, was developed by experts in nutrition and marine biology.

Thymol



HiveAlive uses a unique emulsification process to ensure it blends easily into sugar syrup and does not cause separation or re-crystallization.

Lemongrass



Calms the bees and makes sugar syrup attractive to them.

Made in
Ireland



Available in 100ml, 500ml, 2 litres and 10 litres
Feeds 10 to 1000 hives

Véto-pharma
Committed to apiculture



Using HiveAlive



HiveAlive is easily added to syrup at a rate of 2.5ml HiveAlive per litre syrup.

Feed a minimum of 4 litres of activated syrup per season.

For best results, all syrup fed should be activated with HiveAlive.



HiveAlive can give added boost to your protein patties (up to 10ml per kg of patty).



Bonus: Prevents sugar syrup from fermenting!

HiveAlive's patented manufacturing process preserves the natural bioactive properties of seaweeds which maximises their effectiveness for bee health.

The resulting super concentrate means you only need a little HiveAlive to go a long way (only 2.5ml per litre of syrup).



AUTUMN

To minimise winter losses,
build stronger colonies
and improve intestinal well-being.



SPRING

To maximise colony build-up,
prepare for migration
and improve intestinal well-being.





WORLD'S BEST BEE SMOKERS

Made in the U.S.A by Dadant, our smokers are copied by many, but matched by none. These bee smokers are of the original Bingham smoker design, manufactured with stainless steel and a tough but flexible Naughedhyde fabric bellow. Dadant bee smokers have excellent smoke output and are built to last.



Available from



www.beeswax.co.nz

TOTAL FRAMES PRICE LIST

Made with Converted Wax*

		Price per frame G.S.T. exclusive		
Foundation	10+	360+	1080+	5040+
Full Depth Manuka Special	\$3.22	\$3.08	\$2.93	\$2.87
Full Depth Heavy Brood	\$3.17	\$3.02	\$2.88	\$2.82
Full Depth Medium Brood	\$3.14	\$2.99	\$2.85	\$2.79
Full Depth Thin Super	\$3.18	\$3.03	\$2.89	\$2.83

1/2 Depth Thin Super	\$2.96	\$2.82	\$2.69	\$2.64
----------------------	--------	--------	--------	--------

	10+	480+	1440+	5280+
3/4 Depth Manuka Special	\$3.16	\$3.01	\$2.87	\$2.81
3/4 Depth Heavy Brood	\$3.11	\$2.97	\$2.83	\$2.77
3/4 Depth Medium Brood	\$3.07	\$2.93	\$2.79	\$2.73
3/4 Depth Thin Super	\$3.12	\$2.98	\$2.84	\$2.78

	10+	300+	900+	4800+
Jumbo Heavy Brood	\$4.74	\$4.53	\$4.31	\$4.22

Made with Stock Wax

		Price per frame G.S.T. exclusive		
Foundation	10+	360+	1080+	5040+
Full Depth Manuka Special	\$5.61	\$5.36	\$5.10	\$5.00
Full Depth Heavy Brood	\$5.01	\$4.78	\$4.55	\$4.46
Full Depth Medium Brood	\$4.53	\$4.33	\$4.12	\$4.04
Full Depth Thin Super	\$4.31	\$4.12	\$3.92	\$3.84

1/2 Depth Thin Super	\$3.61	\$3.44	\$3.28	\$3.21
----------------------	--------	--------	--------	--------

	10+	480+	1440+	5280+
3/4 Depth Manuka Special	\$5.15	\$4.91	\$4.68	\$4.59
3/4 Depth Heavy Brood	\$4.55	\$4.35	\$4.14	\$4.06
3/4 Depth Medium Brood	\$4.20	\$4.01	\$3.82	\$3.74
3/4 Depth Thin Super	\$4.00	\$3.82	\$3.64	\$3.57

	10+	300+	900+	4800+
Jumbo Heavy Brood	\$7.51	\$7.17	\$6.83	\$6.69

- All prices are G.S.T. exclusive. Total Frames with Converted wax ex Hamilton are subject to a \$1.00 / kg equivalent freight surcharge.
- 120+ Total frames are strapped in bundles of 15 frames and packed on pallets of 360 Full Depth or 480 3/4 Depth
- 10-100 Total Frames are packed in cartons of 10 frames
- Frames can be made with either 33 mm or 35 mm end bars
- Converted Wax price applies when beeswax is supplied to convert into foundation for the frames.
- Prices subject to change without notice.

BEESWAX COMB FOUNDATION PRICE LIST

	Dimensions mm	Sheets per kg	Kgs per carton	CONVERSION*		EX STOCK		
				Carton lots per kg	Less than carton lots per kg	Carton lots per kg	Less than carton lots per kg	10 sheet pack per pack
Manuka Special Full Depth 212	422 x 212	10	20	\$4.52	\$5.65	\$26.69	\$32.03	\$33.36
Manuka Special Full Depth 205	422 x 205	10	20	\$4.52	\$5.65	\$26.69	\$32.03	\$33.36
Manuka Special 3/4 Depth 157	422 x 157	12	20	\$5.36	\$6.70	\$27.54	\$33.05	\$28.69
Manuka Special 3/4 Depth 145	422 x 145	12	20	\$4.50	\$5.63	\$26.68	\$32.02	\$27.79
Heavy Brood Full Depth 212	422 x 212	13	17	\$5.10	\$6.38	\$27.27	\$32.72	\$26.22
Heavy Brood Full Depth 205	422 x 205	13	17	\$5.10	\$6.38	\$27.27	\$32.72	\$26.22
Heavy Brood 3/4 Depth 157	422 x 157	16.5	17	\$6.37	\$7.96	\$28.54	\$34.25	\$21.62
Heavy Brood 3/4 Depth 145	422 x 145	16.5	17	\$5.09	\$6.36	\$27.26	\$32.71	\$20.65
Heavy Brood Jumbo 266	422 x 266	9	15	\$6.42	\$8.03	\$28.59	\$34.31	\$39.71
Heavy Brood Jumbo 259	422 x 259	9	15	\$6.42	\$8.03	\$28.59	\$34.31	\$39.71
Medium Brood Full Depth 212	422 x 212	17	15	\$5.85	\$7.31	\$28.03	\$33.64	\$20.61
Medium Brood Full Depth 205	422 x 205	17	15	\$5.85	\$7.31	\$28.03	\$33.64	\$20.61
Medium Brood 3/4 Depth 157	422 x 157	21	15	\$7.14	\$8.93	\$29.31	\$35.17	\$17.45
Medium Brood 3/4 Depth 145	422 x 145	21	15	\$5.84	\$7.30	\$28.01	\$33.61	\$16.67
Thin Super Full Depth 212	422 x 212	21	17	\$8.12	\$10.15	\$30.29	\$36.35	\$18.03
Thin Super Full Depth 205	422 x 205	21	17	\$8.12	\$10.15	\$30.29	\$36.35	\$18.03
Thin Super 3/4 Depth 157	422 x 157	27	17	\$10.71	\$13.39	\$32.88	\$39.46	\$15.22
Thin Super 3/4 Depth 145	422 x 145	27	17	\$8.10	\$10.13	\$30.28	\$36.34	\$14.02
Thin Super Ideal 1/2 Depth 113	422 x 113	37	17	\$10.06	\$12.58	\$32.24	\$38.69	\$10.89

- All prices are G.S.T. exclusive, plus freight. Conversion orders ex Hamilton are subject to a \$1.00 / kg freight surcharge.
- Minimum kg order is 5 kgs. Orders less than 5 kgs are supplied in packs of 10 sheets Ex Stock.
- For orders over 500 kgs contact us for pricing.
- Conversion only available to Beekeepers who supply suitable beeswax for processing. Freight on wax to Orari and foundation back at beekeepers cost.
- FD 212 and 3/4 157 foundation is made to fit Alliance frames with a grooved bottom bar. FD 205 and 3/4 145 width foundation is made to fit Alliance frames with a plain bottom bar. Half depth foundation is made to fit Alliance Ideal frames with a plain bottom bar.
- We can also manufacture foundation to dimensions different from above. For custom sizes a non-standard set up fee of \$25 will apply for orders less than 200 kgs.
- Prices subject to change without notice.

excl.GST incl.GST

APIVAR - Miticide Strips

10 strips per pack, 1000 strips per carton.

10+	ea	4.89	5.62
100+	ea	4.45	5.12
500+	ea	3.78	4.35
1,000+	ea	3.49	4.01
5,000+	ea	3.25	3.74
10,000+	ea	3.20	3.68
20,000+	ea	3.15	3.62

www.apivar.co.nz**Bayvarol - Miticide Strips**

20 strips per pack	1+	pk	51.44	59.16
	5+	pk	46.90	53.94
	36	pk	40.01	46.01

800 strips per carton	1+	ctn	1478.20	1699.93
	12+	ctns	1433.86	1648.94

HIVE ALIVE - Complementary feed for bees

Dosage: Recommended 10ml / hive
add to sugar syrup @ 2.5ml / litre

100 ml	ea	28.40	32.66
500 ml	ea	117.58	135.22
2 L	ea	297.98	342.68
10L	ea	1390.00	1598.50

www.hivealivebees.com**MEGABEE PATTIES - Protein Supplement**

20 kg cartons - 40 x 500gm patties per carton

1+	ctn	129.00	148.35
8+	ctns	109.00	125.35
48+	ctns	99.00	113.85
192+	ctns	94.00	108.10

5 kg carton - 10 x 500gm patties per carton

1+	ctn	39.00	44.85
----	-----	-------	-------

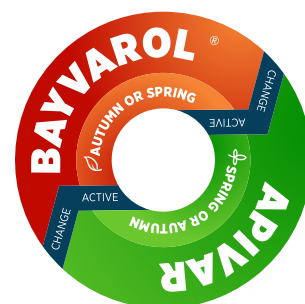
MEGABEE + HIVEALIVE PATTIES

HiveAlive added at 10ml/kg
20 kg cartons - 40 x 500gm patties per carton

1+	ctn	154.00	177.10
8+	ctns	134.00	154.10
48+	ctns	124.00	142.60
192+	ctns	119.00	136.85

5 kg carton - 10 x 500gm patties per carton

1+	ctn	45.00	51.75
----	-----	-------	-------



MEGABEE WINTER PATTIES

20 kg cartons - 40 x 500gm patties per carton

1+	ctn	99.00	113.85
8+	ctns	84.00	96.60
48+	ctns	74.00	85.10
192+	ctns	70.00	80.50

5 kg carton - 10 x 500gm patties per carton

1+	ctn	35.00	40.25
----	-----	-------	-------

MEGABEE + HIVEALIVE WINTER PATTIES

20kg cartons - 40 x 500gm patties per carton

1+	ctn	124.00	142.60
8+	ctns	109.00	125.35
48+	ctns	99.00	113.85
192+	ctns	95.00	109.25

5 kg carton - 10 x 500gm patties per carton

1+	ctn	41.00	47.15
----	-----	-------	-------

MEGABEE POWDER – Protein Supplement

20 kg bags	1+	bag	182.00	209.30
	50+	bags	172.00	197.80

www.megabee.com

Rapeseed Oil for making patties

20 litre container	1+	ea	82.35	94.70
5 litre container	1+	ea	22.21	25.54

PROVAP OXALIC ACID VAPORIZER

ProVap – Commercial Grade

Made in Europe	ea	695.00	799.25
----------------	----	--------	--------

www.oxavap.com

PROVAP PARTS

Replacement Bowl	65.00	74.75
Replacement Screen	79.00	90.85
Replacement Caps	29.00	33.35
Replacement O Ring	3.00	3.45

KELLEY OXALIC ACID VAPORIZER

Wand Type	ea	164.35	189.00
-----------	----	--------	--------

OXALIC ACID

Crystal Form	300gm	ea	6.00	6.90
	per 25 kg bag		110.00	126.50

WHITE SUGAR

25 kg bags	1+	ea	32.00	36.80
------------	----	----	-------	-------



MONITORING AND TESTING

AFB TESTING KIT

1+	ea	22.95	26.39
----	----	-------	-------

VARROA EASYCHECK

Varroa monitoring device	1+	ea	29.00	33.35
12 per carton	12+	ea	27.55	31.68

www.vetopharma.com

PLASTIC DRONE COMB

Full Depth Green	1+	ea	3.37	3.88
	54+	ea	2.82	3.24
	432+	ea	2.46	2.83
	864+	ea	2.32	2.67

STICKYBOARDS

1+	ea	7.53	8.66
10+	ea	6.34	7.29



OCT

WOODWARE & HIVEWARE 2019

excl.GST incl.GST

BOTTOM BOARD

Commercial Bottom Boards with runners and risers
Total Floor - Assembled and Paraffin Dipped

1+	ea	23.90	27.49
10+	ea	22.50	25.88
100+	ea	18.67	21.47
200+	ea	17.68	20.33

Assembled only	1+	ea	23.68	27.23
	10+	ea	20.77	23.89
	100+	ea	16.70	19.21
	200+	ea	16.20	18.63

Kitset	1+	ea	16.00	18.40
	10+	ea	15.80	18.17
	200+	ea	13.30	15.30
	400+	ea	12.50	14.37

Hive Doctor Smart Floor with Bar Entrance Reducer

1+	22.45	25.82
10+	21.35	24.55
100+	19.45	22.37
500+	17.45	20.07
1000+	16.75	19.26

Hive Doctor Smart Floor with Triple Entrance Disk

1+	25.45	29.27
10+	24.16	27.78
100+	21.86	25.14
500+	19.75	22.71
1000+	18.90	21.74

Hive Doctor Original Floor - Available by special order



BOTTOM BOARD ACCESSORIES

Pest Checking Tray for HD Smart Floor

1+	ea	2.99	3.44
10+	ea	2.82	3.24
100+	ea	2.52	2.90

Triple Disk Entrance for HD Smart Floor

1+	ea	4.95	5.69
10+	ea	4.66	5.36
100+	ea	4.16	4.78
500+	ea	3.75	4.31

Bar Entrance Reducer for HD Smart Floor

1+	ea	1.95	2.24
10+	ea	1.85	2.13
100+	ea	1.75	2.01
500+	ea	1.40	1.61

Wooden Feet for Smart Floor

Per pair, treated	1+	ea	6.88	7.91
	10+	ea	6.71	7.72
	100+	ea	6.47	7.44

COMB FOUNDATION - Beeswax

See separate price lists for Conversion and Ex Stock - Page 16.

COMB FOUNDATION - Plastic

Full Depth - Short or Long

10+	ea	2.05	2.36
100+	ea	1.95	2.24
1000+	ea	1.55	1.78
5000+	ea	1.38	1.59

3/4 Depth - Short or Long

10+	ea	2.05	2.36
100+	ea	1.95	2.24
1000+	ea	1.55	1.78
5000+	ea	1.38	1.59

Full Depth Waxed 30g - Short or Long

10+	ea	2.95	3.39
100+	ea	2.85	3.28
1000+	ea	2.45	2.82
5000+	ea	2.28	2.62

3/4 Depth Waxed 30g - Short or Long

10+	ea	2.95	3.39
100+	ea	2.85	3.28
1000+	ea	2.45	2.82
5000+	ea	2.28	2.62

DIVISION BOARDS

Hivemat with entrance, customisation available.

Total Division Board - Assembled and Paraffin Dipped

1+	ea	12.33	14.18
10+	ea	11.36	13.06
100+	ea	10.30	11.85

Assembled only

1+	ea	11.40	13.11
10+	ea	10.51	12.09
100+	ea	9.52	10.95



See page 16



ESCAPE BOARDS

Hive mat with metal corner escapes.
Total Escape - Assembled and Paraffin Dipped

Two Corners	1+	ea	19.90	22.89
	10+	ea	18.20	20.93
	100+	ea	16.10	18.52
Assembled only	1+	ea	18.90	21.74
	10+	ea	17.20	19.78
	100+	ea	15.20	17.48
Fours corners	1+	ea	23.90	27.49
	10+	ea	22.20	25.53
	100+	ea	20.10	23.12
Assembled only	1+	ea	22.90	26.33
	10+	ea	21.10	24.27
	100+	ea	19.20	22.08
Bare Escapes				
Metal Corner	1+	ea	2.10	2.42
	10+	ea	1.90	2.19
	100+	ea	1.69	1.94



EXCLUDERS - USA Welded Wire

with Wooden Frames
Total Excluder - Assembled and Paraffin Dipped

	1+	ea	16.93	19.47
	10+	ea	14.56	16.74
	100+	ea	12.95	14.89
	500+	ea	12.33	14.18
Assembled only	1+	ea	15.41	17.72
	10+	ea	13.35	15.35
	100+	ea	12.25	14.09
	500+	ea	11.63	13.37
Standard Grids only	30+	ea	11.64	13.39
	120+	ea	10.63	12.22
	480+	ea	10.09	11.60
Frames only	10+	set	3.00	3.45
	100+	set	2.74	3.15



EXCLUDERS - USA Welded Wire

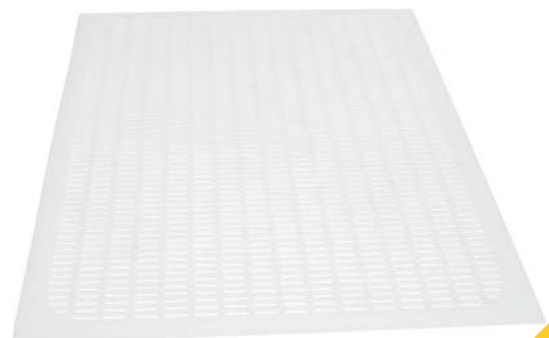
with Galvanised Frames (20 per carton)

1+	ea	16.81	19.33
20+	ea	14.57	16.76
100+	ea	13.37	15.38
500+	ea	12.70	14.60



EXCLUDERS - Plastic

1+	ea	6.65	7.65
20+	ea	6.15	7.07
100+	ea	5.25	6.04
500+	ea	4.00	4.60



excl.GST incl.GST

FEEDERS

Plastic Frame Type

FD 3 Ltr (1 Frame)	1+	ea	8.90	10.24
57 per carton	10+	ea	8.75	10.06
	100+	ea	8.49	9.76
FD 5 Ltr (2 Frame)	1+	ea	9.90	11.39
33 per carton	10+	ea	9.65	11.10
	100+	ea	9.41	10.82
FD 7 Ltr (3 Frame)	1+	ea	9.90	11.39
24 per carton	10+	ea	9.65	11.10
	100+	ea	9.41	10.82
¾ D 2 Ltr (1 Frame)	1+	ea	8.90	10.24
40 per carton	10+	ea	8.75	10.06
	100+	ea	8.49	9.76
¾ D 3.7 Ltr (2 Frame)	1+	ea	8.90	10.24
44 per carton	10+	ea	8.75	10.06
	100+	ea	8.49	9.76



Plastic Frame Type, with Cap & Ladder

1 Frame Feeder 3 Ltr	1+	ea	8.90	10.24
	30+	ea	8.75	10.06
	90+	ea	8.49	9.76
Mann Lake FD 4 Ltr	1+	ea	13.48	15.50
	10+	ea	12.39	14.25
	100+	ea	11.22	12.90
Hive Doctor FD 5 Ltr	1+	ea	13.80	15.87
	10+	ea	12.70	14.61
	100+	ea	11.68	13.43
Mann Lake FD 6 Ltr	1+	ea	14.74	16.95
	10+	ea	13.48	15.50
	100+	ea	12.39	14.25



TOTAL FEEDER – 14 Litres

140mm Half Top Feeder with 2 plastic inserts
Assembled and Paraffin Dipped

	1+	ea	28.54	32.82
	10+	ea	27.29	31.38
	200+	ea	25.03	28.78
Assembled, Painted and Dipped				
	200+	ea	28.67	32.97
Feeder inserts only				
	1+	ea	6.30	7.25
	100+	ea	6.04	6.95
Rims only – 140 mm deep, with handholds, no rebate				
200 per pallet	1+	ea	8.20	9.43
	10+	ea	7.60	8.74
	100+	ea	6.50	7.48
	200+	ea	6.40	7.36



FRAMES, FRAMES & MORE FRAMES



Assembled & Waxed - Just add bees!



Assembled only - Just add beeswax



Kitset - DIY



nzbeeswax
LIMITED

www.beeswax.co.nz
info@beeswax.co.nz
03 693 9189 or 07 849 6853

excl.GST incl.GST

TOTAL FEEDER with Bee Saver – 9.5 Litres

90mm Top Feeder with Bee Saver
Assembled and Paraffin Dipped

1+	ea	22.96	26.40
10+	ea	21.18	24.36
100+	ea	19.29	22.18
400+	ea	19.17	22.05

Assembled, Painted and Dipped

100+	ea	22.67	26.07
400+	ea	20.85	23.98

Top Feeder Insert only – 9.5 litres

1+	ea	7.78	8.95
50+	ea	7.12	8.19
400+	ea	5.82	6.69

Bee Saver for Top Feeder

1+	ea	2.90	3.34
50+	ea	2.52	2.90
400+	ea	2.20	2.53

Rims only – 90mm deep, no handholds, no rebate

400 per pallet	1+	ea	6.00	6.90
	10+	ea	5.70	6.56
	100+	ea	4.90	5.64
	400+	ea	4.80	5.52



Hive Doctor One Piece Top Feeder - 12 Litres

The new **One Piece Top Feeder** from Hive Doctor saves you time and money

1+	ea	19.40	22.31
50+	ea	17.81	20.48
400+	ea	16.22	18.65

FRAMES - Assembled and Wired

Full Depth, 33mm or 35mm end bars, grooved bottom bar

20+	ea	2.37	2.73
40+	ea	2.28	2.62
160+	ea	2.00	2.31
640+	ea	1.87	2.15
5120+	ea	1.80	2.07

3/4 Depth, 33mm end bars, grooved bottom bar

40+	ea	2.28	2.62
160+	ea	1.90	2.19
800+	ea	1.83	2.10
4800+	ea	1.70	1.96

excl.GST incl.GST

FRAMES - Total Frames

Fully assembled wired and waxed frame ready to put directly into your hive. See separate price list - Page 15.

FRAMES – Alliance brand wooden kitset

Hoffman Full Depth, 33mm or 35mm end bars
10 mm grooved bottom bar.

100 per carton	10+	ea	1.60	1.84
3500 per pallet	100+	ea	1.25	1.44
	1000+	ea	1.10	1.26
	3500+	ea	1.05	1.21

With Plain bottom bar – subject to availability

100 per carton	100+	ea	1.24	1.43
3500 per pallet	1000+	ea	1.09	1.25
	3500+	ea	1.04	1.20

With Grooved End Bars, 33mm

100 per carton	10+	ea	1.68	1.93
3500 per pallet	100+	ea	1.25	1.44
	1000+	ea	1.15	1.32
	3500+	ea	1.11	1.28

Hoffman 3/4 Depth, 33mm or 35mm end bars
10 mm grooved bottom bar.

100 per carton	10+	ea	1.60	1.84
3500 per pallet	100+	ea	1.25	1.44
	1000+	ea	1.10	1.26
	3500+	ea	1.05	1.21

With Plain bottom bar – subject to availability

100 per carton	100+	ea	1.24	1.43
3500 per pallet	1000+	ea	1.09	1.25
	3500+	ea	1.04	1.20

Ideal Half Depth, 35mm end bar, plain bottom bar

100 per carton	10+	ea	1.60	1.84
3500 per pallet	100+	ea	1.20	1.38
	1000+	ea	1.07	1.23
	3500+	ea	1.04	1.20

Jumbo Hoffman Style, 33mm end bars

	10+	ea	2.66	3.06
	100+	ea	1.98	2.28
	1000+	ea	1.83	2.10

Manley Frames, 3/4 Depth, 10mm grooved bottom bar

100 per carton	10+	ea	1.80	2.07
3500 per pallet	100+	ea	1.40	1.61
	1000+	ea	1.25	1.44
	3500+	ea	1.20	1.38

FRAMES – Wooden frame, Plastic Sheet

Alliance frame, 33mm or 35mm end bars, Plastic Comb
Foundation inserted.

Full Depth - Waxed 30g	10+	ea	5.13	5.90
	100+	ea	4.90	5.64
	1000+	ea	4.15	4.77
	5000+	ea	3.98	4.58

Full Depth - Unwaxed	10+	ea	4.23	4.86
	100+	ea	4.00	4.60
	1000+	ea	3.25	3.74
	5000+	ea	3.08	3.54

			excl.GST	incl.GST
3/4 Depth- Waxed 30g				
10+	ea		5.08	5.84
100+	ea		4.85	5.58
1000+	ea		4.10	4.72
5000+	ea		3.93	4.52

3/4 Depth – Unwaxed

10+	ea		4.18	4.81
100+	ea		3.95	4.54
1000+	ea		3.20	3.68
5000+	ea		3.03	3.48

FD with Long Foundation Inserts- Available in kitset only

FRAMES – Plastic Beetek Waxed, (30g)

Hoffman Full Depth – WAXED (30g)

54 per carton	10+	ea	3.87	4.45
	54+	ea	3.30	3.80
	432+	ea	3.20	3.68
	864+	ea	3.02	3.47
	5184+	ea	2.93	3.37
	10,368+	ea	2.87	3.30

Hoffman or Manley 3/4 Depth – WAXED (30g)

75 per carton	10+	ea	3.82	4.39
	75+	ea	3.25	3.74
	600+	ea	3.15	3.62
	1200+	ea	2.97	3.42
	4800+	ea	2.88	3.31
	9600+	ea	2.82	3.24

FRAMES – Plastic Beetek

Hoffman Full Depth

54 per carton, 864 per pallet

	10+	ea	2.97	3.42
	54+	ea	2.40	2.76
	432+	ea	2.30	2.65
	864+	ea	2.12	2.44
	5184+	ea	2.03	2.33
	10,368+	ea	1.97	2.27

Hoffman or Manley 3/4 Depth

75 per carton, 1200 per pallet

	10+	ea	2.92	3.36
	75+	ea	2.35	2.70
	600+	ea	2.25	2.59
	1200+	ea	2.07	2.38
	4800+	ea	1.98	2.28
	9600+	ea	1.92	2.21

HIVE MATS

4.75 mm Hardboard with 22 mm Wood Rim

Total Mat - Assembled and Paraffin Dipped

	1+	ea	11.23	12.91
	10+	ea	10.36	11.91
	100+	ea	9.38	10.79
	500+	ea	8.96	10.30

Assembled only	1+	ea	9.90	11.39
	10+	ea	9.50	10.93
	100+	ea	8.60	9.89
	500+	ea	8.20	9.43



Frames only for Hive Mats

10+	ea	3.40	3.91
100+	ea	2.90	3.34

Hardboard only	100+	ea	5.40	6.21
----------------	------	----	------	------

NUC BOXES

Wooden 5 Frame Box and Base

Total Nuc Box - Assembled and Paraffin Dipped

1+	ea	33.86	38.94
10+	ea	30.54	35.12
100+	ea	27.72	31.88

Assembled, Painted and Dipped

100+	ea	31.90	36.69
------	----	-------	-------

Assembled only	1+	ea	30.87	35.50
	10+	ea	27.80	31.97
	100+	ea	25.23	29.01

Kitset	1+	ea	24.00	27.60
	10+	ea	21.50	24.73
	100+	ea	19.50	22.43

Smart Nuc Full Depth 5 Frame

Complete (Corflute)

Includes: 2 vents, 1 entrance disc and set of Velcro dots

1+	ea	15.84	18.22
25+	ea	15.42	17.73
300+	ea	14.55	16.73
1000+	ea	13.65	15.70

Smart Nuc Rotating Queen Excluder

1+	ea	2.00	2.30
100+	ea	1.80	2.07

Smart Nuc Vent / Bee Escape

1+	ea	0.80	0.92
100+	ea	0.70	0.81

Smart Nuc Entrance Disc (Coloured)

1+	ea	1.00	1.15
100+	ea	0.86	0.99

NUC ROOFS

Galv Sprung End Nuc Roof 0.55mm

1+	ea	16.09	18.50
10+	ea	14.35	16.50
100+	ea	11.74	13.50

NUC HIVEMAT

Hive Mat for Nuc Box

Total Nuc Mat - Assembled and Paraffin Dipped

1+	ea	11.23	12.91
10+	ea	10.36	11.91
100+	ea	9.38	10.79

Assembled only	1+	ea	10.30	11.85
	10+	ea	9.50	10.93
	100+	ea	8.60	9.89

excl.GST

incl.GST

ROOFS

Galvanised Sprung End 0.80mm

2 handle or 1 handle	1+	ea	17.30	19.90
	10+	ea	15.60	17.94
	100+	ea	14.20	16.33
	400+	ea	13.00	14.95

Galvanised Sprung End 0.60mm

2 handle or 1 handle	1+	ea	14.70	16.90
	10+	ea	13.60	15.64
	100+	ea	12.57	14.46
	400+	ea	12.13	13.95

Tin, Galvanised Rivet Style (0.75mm)

	1+	ea	18.22	20.95
	10+	ea	17.03	19.58
	100+	ea	15.50	17.83
	500+	ea	14.63	16.82

Plastic Roof, Grey, UV, Food Grade

	1+	ea	19.90	22.89
--	----	----	-------	-------



STOREYS - STANDARD GRADE

Tight knots

Full Depth Rebated, 240mm deep, 150 per pallet**Total Box FD** - Assembled and Paraffin Dipped

1+	ea	23.95	27.54
10+	ea	22.72	26.13
150+	ea	20.40	23.46
600+	ea	19.45	22.37

Assembled, Painted and Dipped

1+	ea	28.28	32.52
10+	ea	26.86	30.89
150+	ea	24.17	27.80
600+	ea	22.98	26.43

Assembled only

1+	ea	21.50	24.73
10+	ea	19.40	22.31
150+	ea	18.00	20.70
600+	ea	17.00	19.55

Kitset	1+	ea	18.10	20.82
150 per pallet	10+	ea	15.08	17.34
	150+	ea	13.62	15.66
	600+	ea	12.40	14.26

3/4 Depth rebated, 185mm deep**Total Box 3/4** - Assembled and Paraffin Dipped

1+	ea	21.95	25.24
10+	ea	20.73	23.84
200+	ea	18.73	21.54
600+	ea	17.58	20.22

Assembled, Painted and Dipped

1+	ea	25.90	29.79
10+	ea	24.61	28.30
200+	ea	22.15	25.47
600+	ea	21.10	24.27

Assembled only

1+	ea	18.72	21.53
10+	ea	17.83	20.50
200+	ea	16.34	18.79
600+	ea	15.24	17.53

Kitset	1+	ea	14.00	16.10
200 per pallet	10+	ea	12.10	13.92
	200+	ea	11.16	12.83
	600+	ea	10.26	11.80

1/2 Depth Ideal rebated 146mm - subject to availability**Total Box HD** - Assembled and Paraffin Dipped

1+	ea	20.55	23.63
10+	ea	19.00	21.85
300+	ea	17.64	20.29
600+	ea	16.70	19.21

Assembled only

1+	ea	15.85	18.23
10+	ea	15.80	18.17
300+	ea	14.30	16.45
600+	ea	13.80	15.87

Kitset	1+	ea	12.90	14.84
300 per pallet	10+	ea	12.65	14.55
	300+	ea	11.50	13.23
	600+	ea	11.00	12.65

STOREYS - BUDGET GRADEAssembled, Paraffin Dipped and/or Painted available on request
- subject to availability.**Full Depth rebated** - Subject to availability

Sold in pallet lots only - 150 per pallet

Kitset	150+	ea	10.62	12.21
	600+	ea	9.47	10.89

3/4 Depth rebated - Subject to availability

Sold in pallet lots only - 200 per pallet

Kitset	200+	ea	10.07	11.58
	600+	ea	9.00	10.35

STOREYS - PREMIUM GRADE - Knot free**Full Depth Rebated** - minimum order 150 storeys

Kitset	150+	ea	17.50	20.13
	600+	ea	16.20	18.63

Full Depth Lock Corner - minimum order 150 storeys

Kitset	150+	ea	18.22	20.95
	600+	ea	17.52	20.15

3/4 Depth rebated 185mm - minimum order 200 storeys

Kitset	200+	ea	16.50	18.98
	600+	ea	15.20	17.48

Jumbo 295mm deep Rebated - premium/standard grade**Total Box Jumbo** - Assembled and Paraffin Dipped

	1+	ea	32.38	37.24
	10+	ea	28.57	32.86
	150+	ea	26.25	30.19
	600+	ea	25.30	29.10

Assembled, Painted and Dipped

	150+	ea	32.54	37.42
	600+	ea	31.44	36.16

Assembled only

	1+	ea	27.03	31.08
	10+	ea	23.67	27.22
	150+	ea	21.79	25.06
	600+	ea	20.95	24.09

Kitset	1+	ea	21.99	25.29
	10+	ea	19.05	21.91
	150+	ea	17.59	20.23
	600+	ea	16.86	19.39





**"Taking
Spring Orders
Get In Quick!"**

TOTAL BEEKEEPING SOLUTIONS

Just add bees!

- Total Frames
- Total Box
- Total Feeder
- Total Hive Mat
- Total Excluder
- Total Floor
- Total Escape
- Total Hive

Assembled, Paraffin Dipped (& Custom Painted) Alliance Brand Woodware. Full range available from both our Orari and Hamilton sites.



BEE BLOWER HOSES AND NOZZLES

Std Hoses	per 3m	56.48	64.95
	per 4m	71.26	81.95
	per 10m	153.87	176.95

USA 4m Hose with adaptors	ea	95.61	109.95
Spare Nozzles	ea	22.57	25.96

BEESUITS, VEILS & JACKETS

Deane Beesuits

Adult Suit Folding Hood	ea	144.26	165.90
Childs Suit one piece	ea	109.48	125.90
Adult Suit no hood	ea	97.30	111.90
Hood only for Suit or Jacket	ea	51.30	59.00

Ventilated Beesuit with folding hood

2 layer yellow/white	ea	169.00	194.35
3 layer white premium	ea	199.00	228.85

Jacket Zip up Folding Hood	ea	94.78	109.00
Mesh Top Folding Hood (M,L)	ea	51.30	59.00
Knit Singlet Top with Hood	ea	54.78	63.00
Hood only for Singlet Top	ea	33.83	38.90
Spare Singlet for Knit top	ea	25.04	28.80

Round Plastic Mesh	ea	20.83	23.95
Round Commercial	ea	39.13	45.00
Canvas Hat & Veil one piece	ea	32.13	36.95

HATS - Ventilated Bee Helmet

Woven Fabric Tan	ea	25.78	29.65
Vented Mesh USA white	ea	38.78	44.60
Moulded Plastic	ea	25.78	29.65
Plastic Hat Bands	ea	4.89	5.62

BOOKS AND WALLCHARTS

Control of Varroa NZ	ea	34.70	39.90
Elimination of AFB NZ	ea	34.70	39.90
Queen Bee Biology - Woodward	ea	43.43	49.94
Practical Beekeeping in NZ	ea	43.43	49.94
Starting with Bees NBA NZ	ea	15.21	17.49
Manuka - Cliff van Eaton	ea	30.39	34.95
Beehive Alchemy	ea	39.13	45.00

Projects and recipes using honey, beeswax, propolis, and pollen

Honey Bee Study Prints, set of 12	95.61	109.95
-----------------------------------	-------	--------

The Life of the Honey Bee Wallchart & Booklet

ea	34.74	39.95
----	-------	-------

Beekeeping Posters - set of 5	69.52	79.95
-------------------------------	-------	-------

BRUSHES - wooden handle/ natural bristles

Natural - Premium	1+	ea	10.90	12.54
	6+	ea	9.90	11.39



CAPPINGS SCRATCHER

Strong (Red Handle)	1+	ea	13.90	15.99
	6+	ea	12.43	14.29
Heavy Duty (Blue Handle)	1+	ea	13.90	15.99
	6+	ea	12.43	14.29

DRIP TRAYS PLASTIC – Thermoform

Insert type	1+	ea	17.38	19.99
	10+	ea	15.87	18.25
	100+	ea	14.35	16.50

EMBEDDERS

Electric Transformer & Leads	ea	78.22	89.95
Spur Wire Hand Wheel Embedder	ea	13.00	14.95

FRAME HOLDER – Stainless Steel

1+	ea	14.90	17.14
----	----	-------	-------

GLOVES – Ventilated Premium Leather

(S,M,L,XL,XXL)	1+	pair	34.77	39.99
	6+	pair	31.29	35.98

GLOVES – Non Ventilated Premium Leather

(S,M,L,XL,XXL)	1+	pair	33.90	38.98
	6+	pair	30.22	34.76
Childs size 6-7	1+	pair	33.90	38.98
	6+	pair	30.22	34.76
NZ Rubber L	1+	pair	33.90	38.98
	6+	pair	30.22	34.75

HIVE STRAPPERS- Emlock Type

Complete with 4.5m Galv Strapping

40 per carton	1+	ea	10.90	12.54
	40+	ea	8.90	10.24
	120+	ea	7.60	8.74
	480+	ea	7.30	8.40
Bare Emlock	60+	ea	7.60	8.74
	120+	ea	6.30	7.25
Extra Galv Strapping (approx 16kg coil)	1+	ea	97.96	112.65
	4+	ea	86.09	99.00

WIRE – 0.46mm Galvanised Frame Wire

2.5 kg (approx) reels	1+	ea	31.74	36.50
	10+	ea	28.26	32.50

WIRE – 0.50mm Stainless Steel Frame Wire

100 gm reels	ea	7.39	8.50
500 gm reels	ea	16.96	19.50



HIVE TOOLS

Kelly Type 240mm Red	1+	ea	8.20	9.43
	6+	ea	7.82	8.99
Kelly Type 260mm Heavy Blue	1+	ea	17.35	19.95
	6+	ea	16.09	18.50
Kelly Type 260mm S/S	1+	ea	17.35	19.95
	6+	ea	16.09	18.50
Kelly Type 300mm Jumbo S/S 1+	ea	27.78	31.95	
	6+	ea	24.78	28.50
Maxant Type 270mm Red	1+	ea	9.40	10.81
	6+	ea	8.27	9.51
Maxant Type 270mm S/S	1+	ea	26.04	29.95
	6+	ea	23.91	27.50
Combo Type 210mm Lega S/S	1+	ea	21.70	24.96
	6+	ea	20.43	23.49

HONEY EXTRACTORS

Lega 3 Frame S/S Manual	ea	517.39	595.00
Lega 4 Frame S/S Manual	ea	604.34	695.00

Replacement parts for extractors

Nylon gears, 85mm & 110mm		25.17	28.95
Clear covers – 3 frame per set		29.52	33.95
Clear covers – 4 frame per set		51.30	59.00

CAPPINGS BASKET

Nylon basket for 3 & 4 frame extractors

1+	ea	22.57	25.96
----	----	-------	-------

HONEY GATES

47mm OD – Lega	1+	ea	22.57	25.96
	6+	ea	19.96	22.95
60mm OD – Lega	1+	ea	65.17	74.95

HONEY LABELS

Pure Honey 75mm x 60mm

250 per roll	1+	roll	22.00	25.30
	4+	roll	21.00	24.15

Nutritional Information

1000 per roll	1+	roll	21.50	24.73
---------------	----	------	-------	-------

HONEY STRAINERS

Double S/S Strainer for Polypail		52.13	59.95
Round nylon for Polypail	ea	22.35	25.70
Conical Nylon Med Mesh	ea	22.17	25.50

MOUSE GUARDS

Galv. Clip-on	1+	ea	3.43	3.94
	10+	ea	3.15	3.62
	100+	ea	2.96	3.40

NUC ENTRANCE DISCS

1+	ea	2.00	2.30
10+	ea	1.85	2.13
100+	ea	1.60	1.84



NAILS & STAPLES

Staples – 92/35 high tensile

1600 per box	1+	box	8.84	10.17
32,00 per outer	20+	box	8.52	9.80

Frame wiring

Stapler Tacker – with 800 23/8 staples

	1+	ea	35.65	41.00
Extra staples -1000	1+	box	5.67	6.52

Staples – 71 series, 12mm leg

10,000 per box	1+	box	8.19	9.42
----------------	----	-----	------	------

PLASTIC BAGS

Food Grade Plastic Bags for lining drums, crates and wheelie bins. Letter of Conformity supplied.

Bin Liner – wheelie bins and drums

750 x 375 x 1500, 50um	1+	ea	2.88	3.31
Bundles of 25	25,50,75	ea	2.15	2.47
	100+	ea	1.87	2.15

Carton Liner – cartons and drums

850 x 1100, 60um	1+	ea	1.88	2.16
Bundles of 25	25,50,75	ea	1.41	1.62
	100+	ea	1.22	1.41

Pallet Bags – pallets, large crates and bulk bags

1350 x 1150 x 2160 50mu	1+	ea	6.80	7.82
Rolls of 50	50,100	ea	5.46	6.28

PROPOLIS MATS – Plastic

1+	ea	6.70	7.71
10+	ea	6.11	7.03
100+	ea	5.60	6.44
500+	ea	5.20	5.98

QUEEN CAGES

White Two Piece	10+	ea	0.60	0.69
	100+	ea	0.54	0.62
	500+	ea	0.48	0.55

Beetek One Piece Cage	10+	ea	0.40	0.46
	100+	ea	0.36	0.41
	1000+	ea	0.32	0.37

QUEEN CATCHER

One Hand	1+	ea	23.44	26.96
----------	----	----	-------	-------

Clip	1+	ea	4.25	4.89
------	----	----	------	------

WIRE CRIMPER

Wooden or Plastic with Metal Wheels	ea	14.35	16.50
Spare Wheels	pair	7.39	8.50



QUEEN CELL INCUBATORS

Small Carricell – 70 Cells	ea	524.70	603.40
Small Extra Foam Tray	ea	33.00	37.95
Large Carricell – 144 Cells	ea	595.50	684.83
Large Extra Foam Tray	ea	38.00	43.70
Spare Flexicable	ea	59.80	68.77
Lge Polystyrene – 288 cells	ea	499.00	573.85
Midlands – 180 cells	ea	1,500.00	1,725.00

QUEEN REARING MATERIALS

Jenter Unit – complete	ea	164.35	189.00
Cell Cups	100+ ea	0.15	0.18
With or without lugs	1000+ ea	0.13	0.15
Cell Bars	1+ ea	2.69	3.09
	100+ ea	2.26	2.60
Grafting Tool	1+ ea	3.90	4.49
Plastic or Bamboo	10+ ea	2.90	3.34
Grafting Brush – Sable	ea	6.90	7.94
Queen Marking Kit 1 colour	ea	18.22	20.95
Queen Marking Kit 5 colours	ea	43.43	49.94
Queen Marking Pens	ea	9.13	10.50
Queen Immobiliser	ea	3.44	3.96

SMOKERS

4" Tan S/S	1+ ea	31.95	36.74
with Shield	4+ ea	29.95	34.44
3" Lega Italian S/S	1+ ea	47.38	54.49
with Shield	4+ ea	43.03	49.48
4" Lega Italian S/S	1+ ea	53.47	61.49
with Shield	4+ ea	48.25	55.49
4" Lega Italian S/S	1+ ea	63.90	73.49
Tall with Shield	4+ ea	57.82	66.49
4" Dadant USA	1+ ea	89.95	103.44
S/S with Shield	4+ ea	81.76	94.02
4" Dadant USA	1+ ea	96.50	110.98
S/S Tall with Shield	4+ ea	86.51	99.49

Replacement Bellows

Dadant USA Wood	ea	35.21	40.49
Mann Lake USA Plastic	ea	28.25	32.49
Italian Lega Standard	ea	21.30	24.50

STICKERS

Small Lega Bee	1+ ea	1.73	1.99
	10+ ea	1.30	1.50
Large Lega Bee	1+ ea	3.47	3.99
	10+ ea	3.03	3.48

UNCAPPING EQUIPMENT

Speed King USA Electric	ea	251.30	289.00
Plain Medium Duty Knife	ea	47.78	54.95

PARAFFIN WAX – 25 kg CARTONS

25-275 kgs	per kg	3.25	3.74
300-975 kgs	per kg	3.19	3.67
1000 kgs	per kg	2.99	3.44

EXCLUDER CLEANER

ea	7.90	9.09
----	------	------



CUT COMB BOXES

340gm Square	1+	ea	1.30	1.50
245 per carton	100+	ea	1.13	1.30
	245+	ea	0.94	1.08

KAIPAK POLYJARS

250gm Clear with Lids	1+	ea	1.00	1.15
280 per carton	280+	ea	0.70	0.81

500 gm Clear with Lids	1+	ea	1.20	1.38
140 per carton	140+	ea	0.85	0.98
	280+	ea	0.80	0.92

1kg Clear Hexagonal w Lids	1+	ea	2.00	2.30
72 per carton	72+	ea	1.60	1.84
	144+	ea	1.40	1.61

You choose your lid colour

SAFE-A-PAK

500gm Plastic c/w Lids	1+	ea	0.87	1.00
500 per carton	100+	ea	0.57	0.66
	500+	ea	0.50	0.58

1kg Plastic c/w Lids	1+	ea	1.13	1.30
400 per carton	100+	ea	0.86	0.99
	400+	ea	0.77	0.89

5.5kg (4ltr) Plastic with lids	1+	ea	3.21	3.69
80 per carton	80+	ea	2.85	3.28

POLYPAILS

4 Litre (5.5kg) Polypail with Lid

60 per carton	1+	ea	8.10	9.32
	10+	ea	7.48	8.60
	60+	ea	6.79	7.81

30 kg Polypail with Lid	1+	ea	16.90	19.44
	10+	ea	16.04	18.45

Polypail Opener	1+	ea	16.48	18.95
-----------------	----	----	-------	-------

TOTALPAIL

30 kg Polypail with 47mm Honey Gate fitted

	ea	42.61	49.00
--	----	-------	-------

WAX BUCKET

10 kg	1+	ea	9.48	10.90
	10+	ea	8.43	9.69
Lid for wax bucket		ea	2.31	2.66



TERMS OF TRADE

PAYMENT FOR NON ACCOUNT HOLDERS

Payment on Proforma Invoice prior to dispatch.

PAYMENT FOR ACCOUNT HOLDERS

Payment of accounts is to be made by the 20th of the month following date of Invoice.

INTEREST

Interest will be charged on overdue accounts at a rate of 1.5% per month while the amount remains overdue.

TITLE

Goods remain the property of NZ Beeswax Ltd until fully paid for.

PRICES

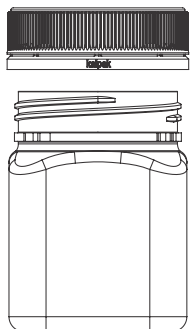
Prices are subject to change without prior notice and will be those determined and in existence at the time of dispatch.

Innovative honey packaging.

Discover the next level in service, quality AND dynamic packaging solutions.



► Producers of premium honey jars



1. Lid available with or without induction seal
2. Good strong lids that won't pop off
3. Softer touch ribs - gentler on hands and machinery
4. Positive action tamper evident ring - no fail, no fuss, guaranteed
5. Twin start thread for a positive secure closure
6. Attractive shoulder design with stronger curvature increases top loading - reduced risk of collapsing or leakage
7. Thicker and more prominent wall radius for easy and accurate labelling



NOW taking orders for less than pallet lots, exclusively distributed in New Zealand by NZ Beeswax Ltd

Ph: 03 693 9189
Email: info@beeswax.co.nz
www.beeswax.co.nz

*NOT ALL JARS SIZES AND COLOURS ARE AVAILABLE AT MINIMUM ORDER

► Tamper evident plastic lids



KAIPAK HAS CREATED A SUPERIOR VERSION OF WHAT'S CONSIDERED STANDARD IN PET JAR DESIGN.

We have given plastic lid design a human touch: our plastic jar lids are gentler on hands and machinery. PLUS when it comes to colours, we've got you covered... if it's not here - just ask!

Talk to the innovative leaders in plastic packaging

P 03 928 8906 **M** +64 275 688 785 **E** sales@kaipak.co.nz www.kaipak.co.nz



Kaipak



44 Gladstone St South, Orari, RD 22, GERALDINE 7992
Ph: 03 693 9189 E: info@beeswax.co.nz W: www.beeswax.co.nz